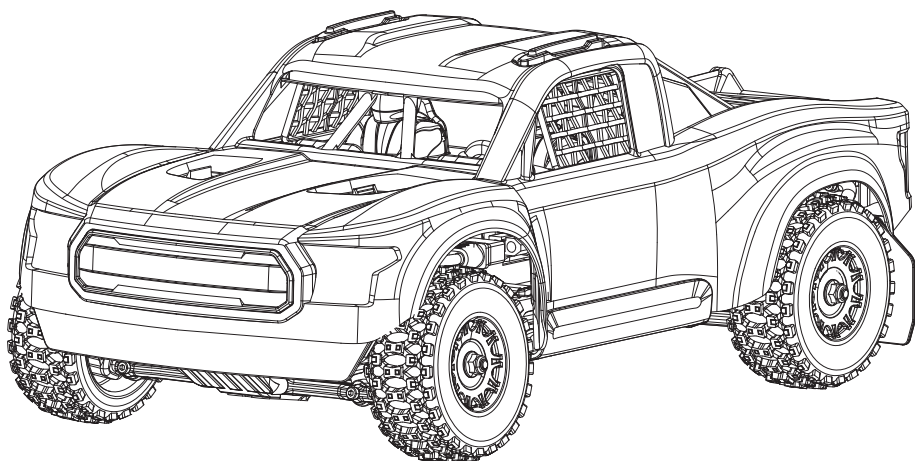


# Udini R/C

## SIERRA FLUX

### OPERATING INSTRUCTIONS



If any problem with the product, **EVEN IF** return period has ended, feel free to reach out to us directly via the retailer which the consumer purchased the product from.

**IMPORTANT!**  
**WARRANTY**  
**GUARANTEE**

**1:12**

**4x4**

**2.4**  
**GHZ**

**14+**  
AGES

For more technical issues, please consult our customer service team

# TABLE OF CONTENTS



## 01

### WARNING & PRECAUTION & POLICY STATEMENT 03

01 Important Notice	03
02 Warning Statement	03
03 Use Sequential	04
04 Attention Statement	04
05 Battery Safety Statement	05
06 WEEE Compliance	05
07 FCC Note	06

### 07 VEHICLE SPECIFICATION

07 01 Vehicle data	
07 02 Electronic system spec.	
07 03 Transmission system spec.	
07 04 Structure system spec.	

## 02

## 03

### QUICK START

Step 1 - Charge the Li-battery before playing	08
Step 2 - Open the truck body	09
Step 3 - Check the connecting on electronic parts	10
Step 4 - Connect the battery to ESC	10
Step 5 - Install the transmitter batteries	10
Step 6 - Power on transmitter & ESC for frequency pairing	11
Step 7 - Assemble the body & Start to play	11
Step 8 - Power OFF the ESC & transmitter	12
Step 9 - Product maintenance	12

### 08

## 04

### ESC, RECEIVER & TRANSMITTER INSTRUCTIONS 13

#### 01 ESC instructions

ESC data	13
ESC installation	13
ESC operation tips	13

#### 02 Receiver instructions

Receiver data	14
Receiver installation	14

#### 04-03 Transmitter instructions

Transmitter data	15
Transmitter functions	15
Battery installation	16
ST.TRIM	17
ST.D/R	17
CH5, Gyroscope adjustment	18
Transmitter indicator light	18
CH4, Speed Limiter Switch	18
Power Switch	19
CH3, Control button	19
CH2, Throttle trigger	19
CH1, Steering wheel	19

### 20 BUYABLE ACCESSORIES LIST

20 01 Plastic parts & hardware	
21 02 Electronic devices	
22 03 Screw type	
22 04 Tool	

### 23 TROUBLE SHOOTING

### 25 EXPLOSION VIEW (APPENDIX)

## 05

## 06

## 07



## 01 - WARNING & PRECAUTION & POLICY STATEMENT

Remark: Including Section 01-01 to 01-07.

01-01

### IMPORTANT NOTICE

- (1) The package or instruction manual contains important information and must be **RETAINED**.
- (2) Our company's products are improving all the time, design and specifications are subject to change without notice. All the information in this manual has been carefully checked to ensure accuracy, if any printing errors, our company reserves the final interpretation right.
- (3) The spare parts (including batteries and chargers) mentioned in the User Manual are subject to sales. KIT version not included electronic component. Configurations vary by version, please refer to the sales version.
- (4) Failure to follow these instructions (including PART 01, and others) may result in injury to yourself or others. You may also cause property damage or model damage.
- (5) For more safety precautions, please refer to the "Disclaimer and Safety Operation Guidelines".
- (6) Usage: Please follow the instructions to install and operate the model.



Download the operating guide

01-02

### WARNING STATEMENT

#### Warning:

The product should only be used by adults and children over 14 years. Adult supervision is required for children under 14 years.

#### Hinweis:

Dieses Produkt ist für die Erwachsene und die Kinder ab 14 Jahren. Die Kinder unter 14 Jahren müssen von Erwachsenen beaufsichtigt werden.

#### Avertissement:

Ce produit est destiné aux adultes et aux enfants de plus de 14 ans. Les enfants de moins de 14 ans doivent être surveillés par des adultes.

#### Avvertimento:

Questo prodotto è destinato all'uso per i adulti e bambini di età superiore ai 14 anni. I bambini di età inferiore ai 14 anni devono essere sorvegliati da un adulto.

#### Advertencia:

Este producto es para adultos y niños mayores de 14 años. Los niños menores de 14 años deben ser supervisados por adultos.

**警告:** この製品は、大人と14歳以上の子供には使用対象です。

14歳未満の子供は大人の監視が必要です。

. ويحتاج الأطفال دون سن الرابعة عشرة إلى رعاية البالغين

تحذير : هذا المنتج يستخدم فقط من قبل البالغين والأطفال فوق سن 14



**DANGER!**  
Only suitable  
for age 14+

<b>Before Operation</b>	<ol style="list-style-type: none"> <li>(1) Read the instruction manual in detail, or ask for the person with experience in operation, and read with the guardian if necessary.</li> <li>(2) Make sure all screws and nuts are properly tightened.</li> <li>(3) The transmitter and the vehicle should always use the battery with saturated power to avoid losing control of the model.</li> <li>(4) Please make sure that the throttle trigger is in the center position.</li> </ol>
<b>During Operation</b>	<ol style="list-style-type: none"> <li>(1) First turn on the power of the transmitter, and then turn on the power of the model.</li> <li>(2) Use this product only in open areas (&gt;5x5m) without pedestrians.</li> <li>(3) DO NOT put fingers or any objects inside rotating and moving parts.</li> </ol>
<b>After Operation</b>	<ol style="list-style-type: none"> <li>(1) First turn off the model power, then turn off the transmitter's power, and take out the all battery.</li> <li>(2) Daily maintenance is required after the model is used.</li> </ol>

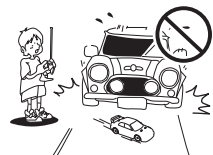
- (1) The model must stop immediately and check for the reasons when it is operating abnormal.
- (2) Keep in mind that people around you may also operate a radio control model.
- (3) The motor is a heating part, please do not touch it.
- (4) If you don't use the model for a long time, please raise the chassis to let the wheels hang in the air.
- (5) Please use this product only in empty place! It is strictly forbidden to use it on roads, living area, parks, indoor areas, children or places where people gather, otherwise injury may occur.



The product contains small and sharp parts. Keep away from children.



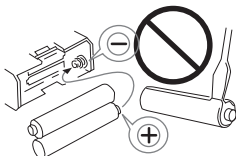
Be sure to read the instruction manual in detail, or ask for the person with experience in operation, and read with the guardian if necessary.



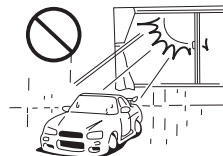
DO NOT operate in public streets or crowded places to avoid accidents.



Cutters, nippers and screw drivers need careful handling.



Please don't reverse contact or disassemble the battery, as this way will cause the battery to explode.



DO NOT put the model in high temperature, humidity and direct sunlight.

- Please read and observe all precautions before use. Improper use of battery may cause danger.
  - It is normal for the battery to heat up after operation. Please be careful when handling the battery. If the wire is worn, it is easy to short circuit and cause fire.
- 1) Pay attention to the polarity of the battery when installing or replacing the battery;
  - 2) Different types of batteries or old and new batteries should not be mixed;
  - 3) After use, please disconnect the power supply and pull out the plug;
  - 4) DO NOT charge the battery when it is bulging or expanding;
  - 5) Keep away from damp, corrosive environment and heat source;
  - 6) DO NOT short circuit, decompose or put the battery into fire;
  - 7) Please use the attached special charger to charge the battery;
  - 8) Please charge the battery under adult supervision;
  - 9) Remove the battery from the model before charging;
  - 10) DO NOT short circuit any terminals.



**▲ WARNING  
FIRE HAZARD!**



### Li-Po Battery Disposal & Recycling

Wasted Lithium-Polymer batteries must not be placed with household trash. Please contact local environmental or waste agency or the supplier of your model or your nearest Li-Po battery recycling center.



Please help the environment by disposing of your product responsibly at the end of its life. The wheeled bin symbol indicates that this product should not be disposed of in your household waste containers. Instead, the product should be disposed of by using a designated collection point for the recycling of waste electrical and electronic equipment. The Waste of Electrical and Electronic Equipment (WEEE) Directive (2002/96/EC) requires that the best available recycling techniques be employed to minimize the impact on the environment.

Recycling electronics helps by keeping harmful chemicals out of the environment, and also saves money by reusing precious metals. Remove any batteries and dispose of them and the product at your local authority's recycling facility. For more information about where you can drop off your waste equipment for recycling, please contact your local city office your household waste disposal service, or the location where you purchased this product.



This equipment has been tested and found to comply with the limits for a Class B digital device, pursuant to Part 15 of the FCC Rules. These limits are designed to provide reasonable protection against harmful interference in a residential installation. This equipment generates uses and can radiate radio frequency energy and, if not installed and used in accordance with the instructions, may cause harmful interference to radio communications. However, there is no guarantee that interference will not occur in a particular installation. If this equipment does cause harmful interference to radio or television reception, which can be determined by turning the equipment off and on, the user is encouraged to try to correct the interference by one or more of the following measures:

- Reorient or relocate the receiving antenna.
- Increase the separation between the equipment and receiver.
- Connect the equipment into an outlet on a circuit different from that to which the receiver is connected.

**WARNING: Changes or modifications not expressly approved by the party responsible for compliance could void the user's authority to operate the equipment.**

### FCC Notice

The equipment may generate or use radio frequency energy. Changes or modifications to this equipment may cause harmful interference unless the modifications are expressly approved in the instruction manual. Modifications not authorized by the manufacturer may void user's authority to operate this device.

This device complies with Part 15 of the FCC Rules. Operation is subject to the following two conditions: (1) this device may not cause harmful interference, and (2) this device must accept any interference received, including interference that may cause undesired operation.

## FCC Radiation Exposure Statement

The device has been evaluated to meet general RF exposure requirement.

The device can be used in portable exposure condition with out restriction.



### WARNING:

**CHOKING HAZARD** - Small parts. Not for children under 3 yrs.

**Erstickende Gefahr** - Kleine Teile. Nicht für Kinder unter 3 Jahren.

**Danger d'étouffement** - petites pièces. Pas pour les enfants de moins de 3 ans.

**Peligro de asfixia** - Pequeñas piezas. No para niños menores de 3 años.

مخاطر الخنق - اجزاء صغيرة. ليس للأطفال تحت 3 سنوات.





## 02 - VEHICLE SPECIFICATION

Remark: Including Section 02-01 to 02-04.

### 02-01 VEHICLE DATA

Model No.	UD1203
Vehicle Scale	1:12
Vehicle Size	L375×W198×H139mm
Vehicle Weight	1408g (without battery)
Wheelbase	228mm
Ground Clearance	30mm
Battery Compartment Size	L115×W38×H25mm
Wheel Size	ø73.3×30.5mm

### 02-02 ELECTONIC SYSTEM SPEC.

Motor	2845-3800KV Brushless Motor
ESC	Electronic Speed control(ESC), refer to "Section 04-01".
Receiver	Refer to "Section 04-02".
Battery	2400mAh, 11.1V, XT60 connector
Steering Servo	3 wires, 17g copper gear digital servo
Transmitter	Refer to "Section 04-03" for detail.

### 02-03 TRANSMISSION SYSTEM SPEC.

Pinion Gear	0.6M 14T Metal (Position: assembled on the Motor Shaft)
Spur Gear	0.6M 50T Metal (Position: assembled on the Main Shaft)
Input Gear	0.95M 10T Metal (Position: assembled on the Main Shaft)
Main Differential Gear	0.95M 30T Metal
Satellite Gear	0.8M 16T Metal
Planetary Gears	0.8M 8T Metal
Main Driveshaft	Metal
Universal Driveshaft	Metal

### 02-04 STRUCTURE SYSTEM SPEC.

Truck Body	PC
Chassis	2.0mm Thickness High-quality Nylon
Suspension Arm	High-quality Nylon
Shock Absorber	Oil-filled Shock Absorber, Metal
Shock Tower	High-quality Nylon
Wheel Hex	Metal
Deck Board	2.0mm Thickness High-quality Nylon
Motor Mount	Metal



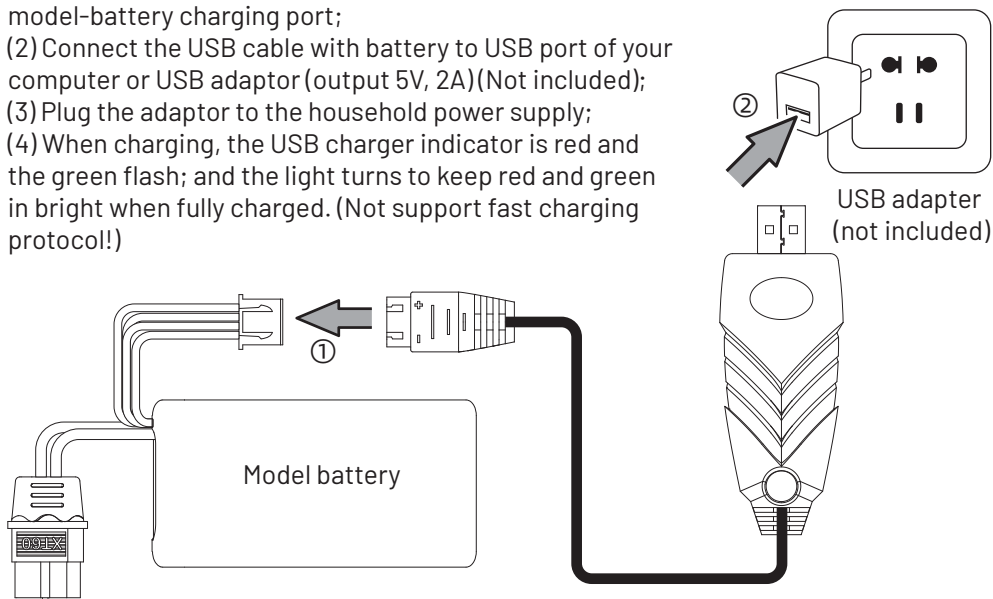
## 03 - QUICK START

Remark: Including Section 03-01 to 03-09.

### 03-01 STEP 1 - CHARGE THE LI-BATTERY BEFORE PLAYING

- The battery contains less power when leaving the factory, so it must be fully charged before use.
- When charging the battery, it must be disconnected from the ESC and separated from the model.
- The battery must be allowed to cool for 20 minutes after use before recharging.

- (1) Connect the included USB charging cable to the model-battery charging port;
- (2) Connect the USB cable with battery to USB port of your computer or USB adaptor (output 5V, 2A)(Not included);
- (3) Plug the adaptor to the household power supply;
- (4) When charging, the USB charger indicator is red and the green flash; and the light turns to keep red and green in bright when fully charged. (Not support fast charging protocol!)



### **WARNING: MUST BE SUPERVISED WHILE CHARGING.**

*Please use the included USB charging cable and make sure it is properly connected.*

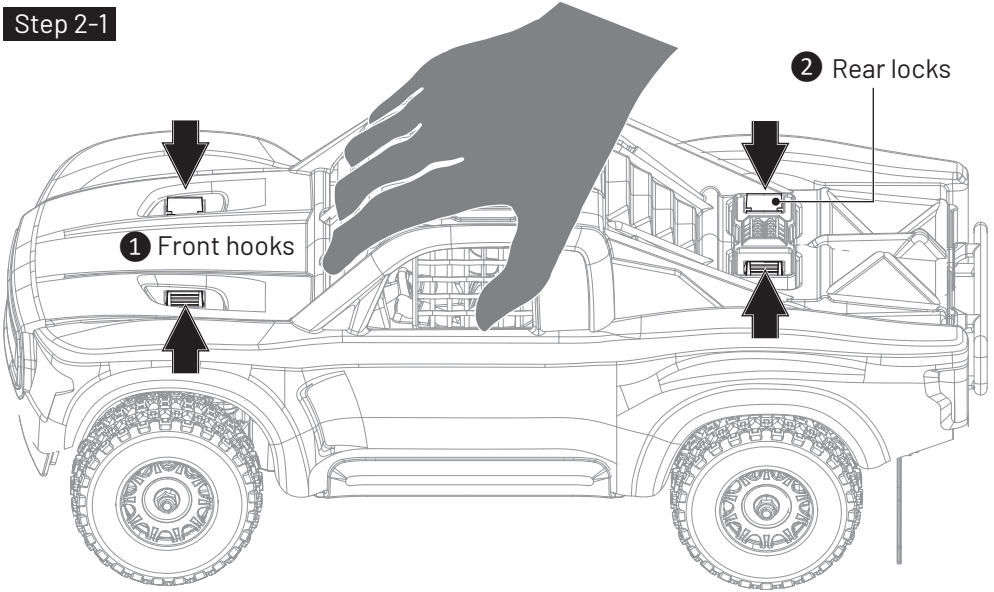
Notes: The charging time provided is experimental data and is for reference only. Actual charging time may vary depending on factors such as battery aging and charger efficiency. Use a charger with appropriate current to avoid overcharging or over-discharging, which helps extend battery lifespan.

## 03-02 STEP 2 - OPEN THE TRUCK BODY

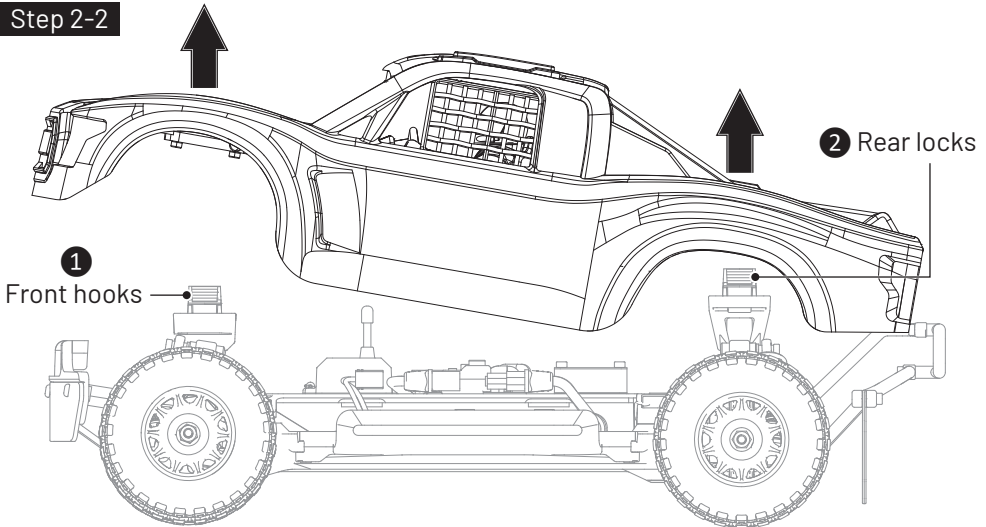
Step 1-1: Press the **1** **2** (front/rear locks) inward to release the body.

Step 1-2: Lift the body upward to remove it.

### Step 2-1



### Step 2-2

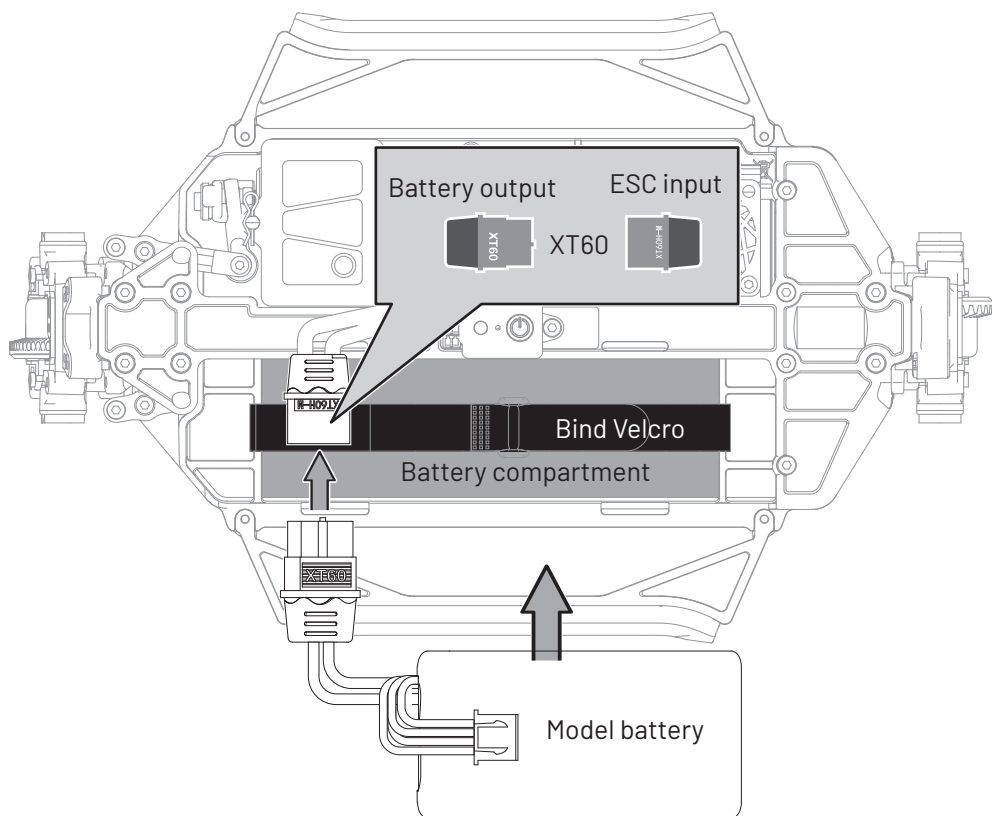


### 03-03 STEP 3 - CHECK THE CONNECTING ON ELECTRONIC PARTS

- After removing the truck body, check the connecting among ESC and other electric parts per the instruction of "Section 04-01-02".

### 03-04 STEP 4 - CONNECT THE BATTERY TO ESC

- Put the battery into the battery compartment, fix the battery with Velcro and then connect with the ESC. Take out the battery when not in use, otherwise the battery is easily damaged.

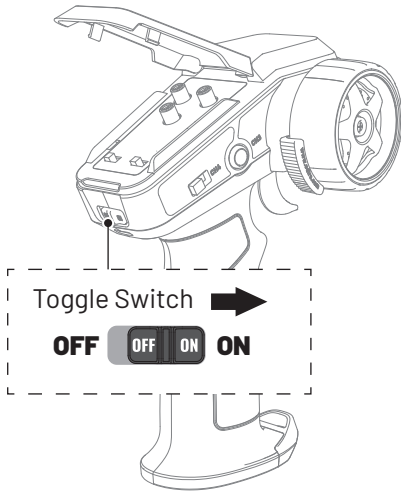


### 03-05 STEP 5 - INSTALL THE TRANSMITTER BATTERIES

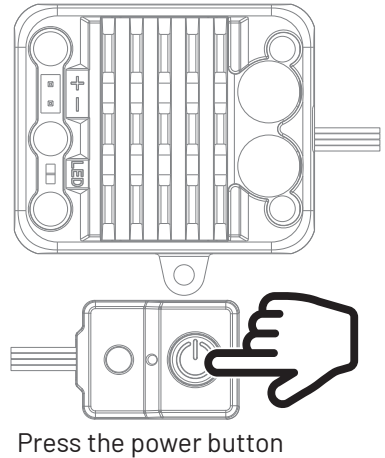
- (1) Open the battery cover at the bottom of transmitter, and then install the 4 PCS of 1.5V AA batteries or 7.4V Li-ion battery with connector type XH2.54-3pin. (Batteries not included).
- (2) For installation detail, refer to the "Section 04-03-03".

- (1) Always power ON your transmitter first, and then power on the ESC.
- (2) The device automatically frequency pairing successful. If all the lights keep bright, it indicates that the frequency pairing is successful. Otherwise, frequency pairing fails and needs to be done again. Refer to "Section 04-03-10" for details.

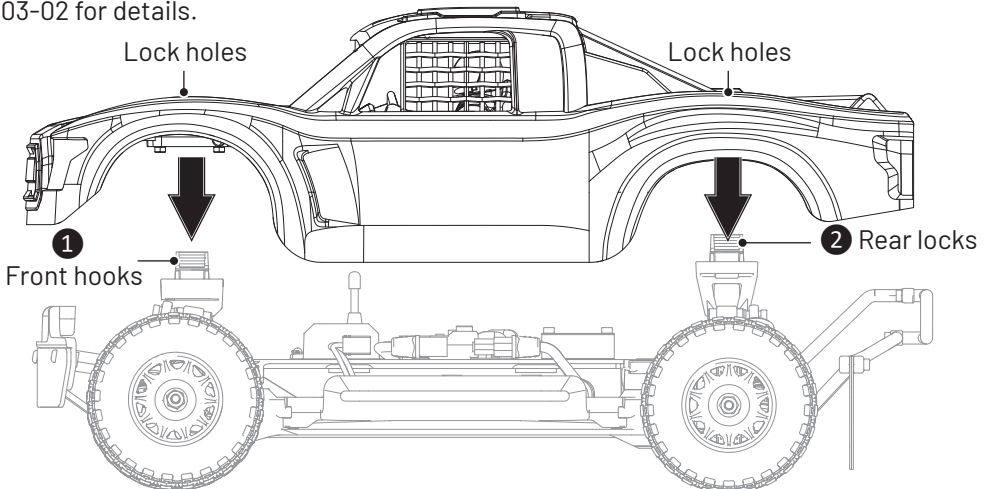
Always power on your transmitter first

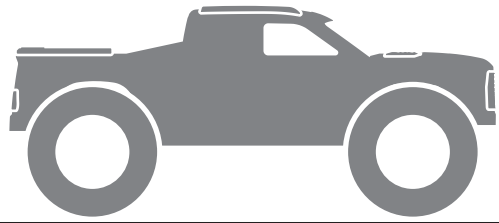


And then power on the ESC



Align the front/rear lock holes on the car shell with the locks ① ②, then press downward until they click into place. (To verify, lift the shell slightly to check if it disengages.) The installation process is the reverse of removal—refer to Section 03-02 for details.





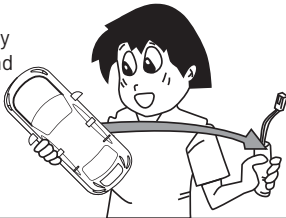
Placed on Horizontal ground

### 03-08 STEP 8 - POWER OFF THE ESC & TRANSMITTER

- (1) First, turn off the vehicle's ESC (press and hold  $\leq 2$  second) power and remove the battery. Open the truck body and refer to "Section 03-02" for details.
- (2) Second, turn off the transmitter power and remove the battery. Open the battery cover and refer to "Section 04-03-03" for details.
- (3) IMPORTANT: Always power OFF the ESC before the transmitter.

### 03-09 STEP 9 - PRODUCT MAINTENANCE

When not in use, remove the battery from the model and transmitter.



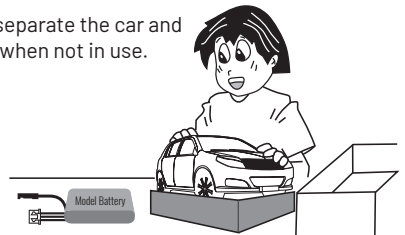
Please remove the sediment and dirt on the car completely and must be kept dry after play.



Apply lubricating oil to external metal parts.



Please separate the car and battery when not in use.





## 04 - ESC, RECEIVER & TRANSMITTER INSTRUCTIONS

Remark: Including Section 04-01 to 04-03.

### 04-01 ESC INSTRUCTIONS

#### 04-01-01 ESC DATA

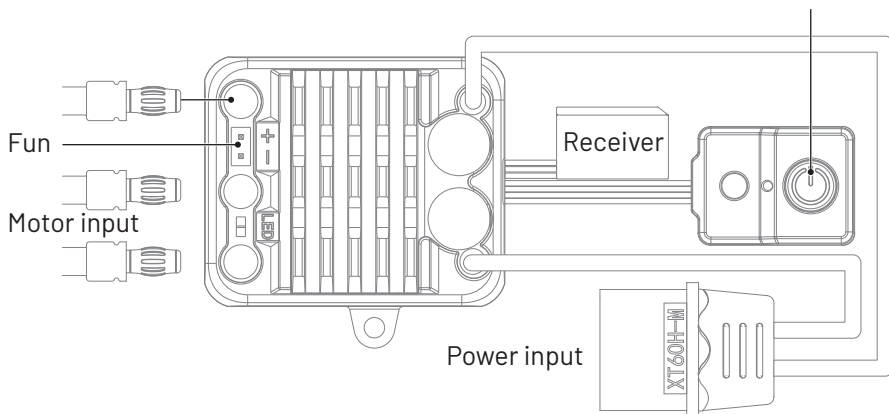
Model:	ESC45
RF Standard:	2.4GHz
Input Power:	2-3S (7.4-11.1V)
Rated current:	45A
Size:	39.7×21×33mm
Power Connector:	XT60
Motor Limit:	2-3S, LiPo
Motor Connector:	3.5mm banana connector

#### 04-01-02 ESC INSTALLATION

Power switch

Short press ( $\leq 1$  second) to turn on the power,

Press and hold ( $\leq 2$  seconds) to turn off the power.



#### 04-01-03 ESC OPERATION TIPS



(1) When starting to play the vehicle, always power ON your transmitter before the ESC.

(2) After playing the vehicle, always power OFF the ESC before the transmitter.

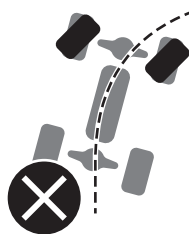
## 04-02 RECEIVER INSTRUCTIONS

### 04-02-01 RECEIVER DATA

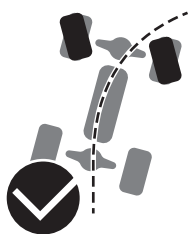
Model	SR6
RF Standard	2.4GHz
Input Voltage	3.6-12V
Rated current	5A
Size	32×15×20mm

### 04-02-02 RECEIVER INSTALLATION

#### Gyroscope Reverse Switch Button



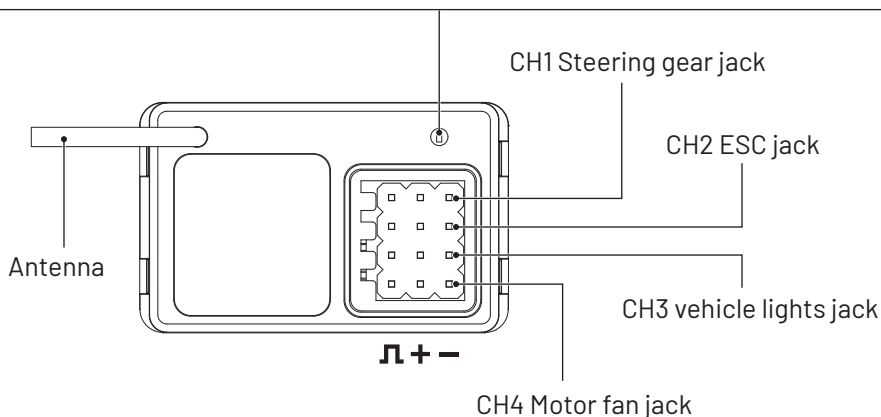
Gyroscope  
same-direction  
action



Gyroscope  
reverse-direction  
action

When the gyroscope's action is opposite, this button can be used to switch. (Use a slender tool like a pin to press into this hole.)

- ① Press the button: one flash indicates positive;
- ② Press the button: two flashes indicate negative.



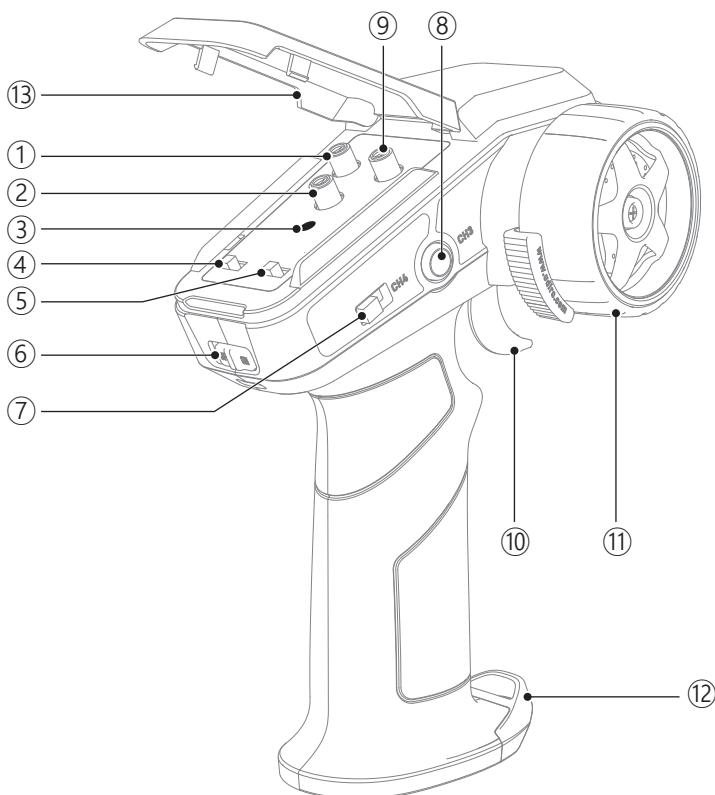
## 04-03 TRANSMITTER INSTRUCTIONS

Before installing and operating your transmitter, please take a few minutes to familiarize yourself with the various features of the system by reading this instruction manual thoroughly.

### 04-03-01 TRANSMITTER DATA

Model	UA42-E01
Control Type	Proportional
Frequency Band	2.4GHz
Channels	4
Control Distance	100m
Input Power Method 1	1.5V AA Battery × 4pcs
Input Power Method 2	7.4V Battery with connector type XH2.54-3pin

### 04-03-02 TRANSMITTER FUNCTIONS



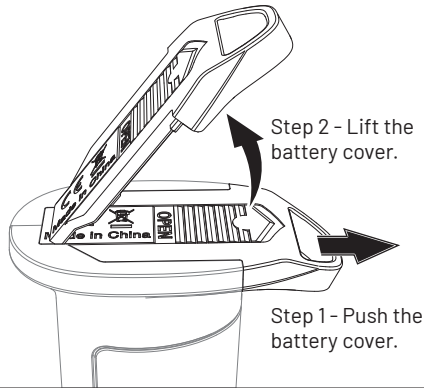
① ST. TRIM	Steering Trim, refer to "Section 04-03-04" for detail.
② CH5	Gyroscope action ratio adjustment, refer to "Section 04-03-06" for detail.
③ Transmitter Indicator	Refer to "Section 04-03-07" for detail.
④ TH. REV	Reverse the throttle function.
⑤ ST. REV	Reverse the steering function.
⑥ Power Switch	Power on / off the transmitter, refer to "Section 04-03-09".
⑦ CH4	Throttle Speed Limiter Switch, refer to "Section 04-02-08" for detail.
⑧ CH3 Control Button	Refer to "Section 04-03-10" for detail.
⑨ ST. D/R	Steering Dual Rate, refer to "Section 04-03-05" for detail.
⑩ CH2, Throttle Trigger	Control the vehicle to move forward/backward, refer to "Section 04-03-11" for detail.
⑪ CH1, Steering Wheel	Control the vehicle to turn right/left, refer to "Section 04-02-12".
⑫ Battery Cover	Battery installation, refer to "Section 04-03-03" for detail.
⑬ Regulatory Interface Cover	To avoid dust or water splash.

## 04-03-03

## BATTERY INSTALLATION

Open battery cover at the bottom of transmitter. Install batteries. Follow the direction of batteries designated in the inside of the battery box.

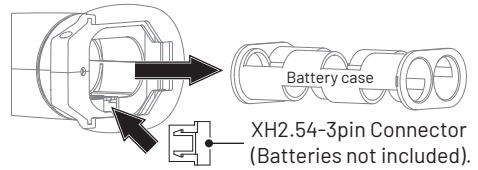
### HOW TO OPEN THE BATTERY COVER



### Input Power Method 2

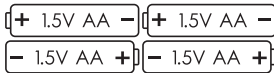
- Step 1: Remove the 1.5V AA battery case.  
 Step 2: Put the 7.4V Li-battery with connector type XH2.54-3pin inside the battery compartment.  
 Battery compartment capacity: 70×37×19mm

**NOTE:** Only 7.4V Li-batteries can be used.

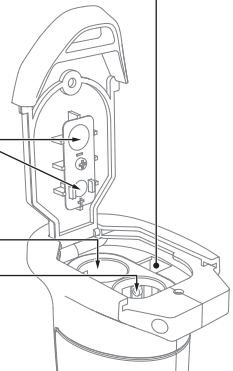


### NOTE POLARITY DIRECTION

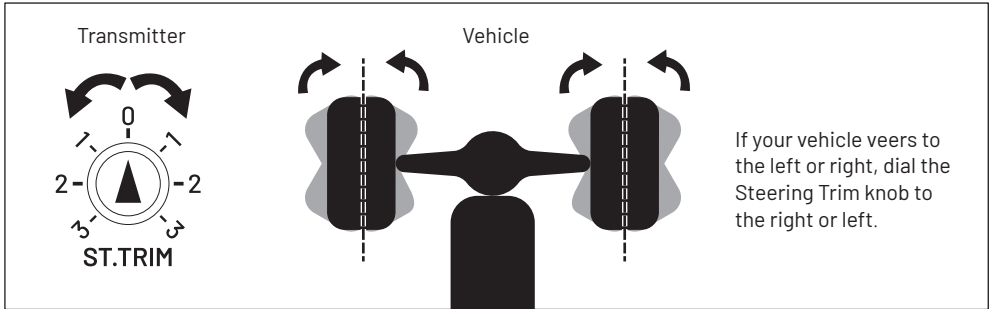
### Input Power Method 1



1.5V AA Battery ×4pcs (Not included)

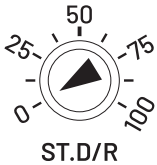


Steering Trim: Trim adjustment allows you to finely tune the inputs from your transmitter. It's the dial you reach for when your RC car isn't tracking straight. The steering trim is what helps navigate the RC car in a straight line.

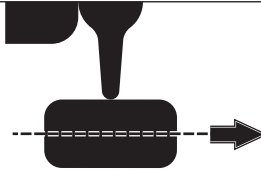


Steering Dual Rate: Steering Dual Rate knob can be set to control the steering throw:  
 (1) Turning the knob clockwise to increase the steering throw.  
 (2) Turning the knob anticlockwise to reduce the steering throw.

## Sample 1



Step 1- Set the ST.D/R knob to "0" position.  
 Step 2- Dial the steering wheel of transmitter to the end.



Result: The wheels cannot turn right or left, only can run straight, even you dial the steering wheel to the end.

## Sample 2

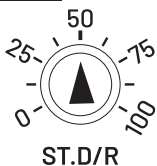


Step 1- Set the ST.D/R knob to "25" position.  
 Step 2- Dial the steering wheel of transmitter to the end.



Result: The wheels can turn right or left under 25% steering throw, turn wider than 0%(Sample 1).

## Sample 3



Step 1- Set the ST.D/R knob to "50" position.  
 Step 2- Dial the steering wheel of transmitter to the end.



Result: The wheels can turn right or left under 50% steering throw, turn wider than 25%(Sample 2) and 0%(Sample 1).

Note: Above are the samples to help the players to understand the ST. D/R function.

The vehicle gyroscope detects motion states based on the conservation of angular momentum, real-time monitoring of Body attitude, Rotational angular velocity, Correcting vehicle posture and direction dynamically. Use the CH5 knob on the Transmitter to adjust the gyroscope's effect ratio and sensitivity:

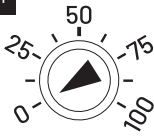
- (1) Clockwise rotation: Increases the effect ratio (enhances gyroscopic correction force).
- (2) Counterclockwise rotation: Decreases the effect ratio (reduces gyroscopic intervention).

1. Before using the ratio of gyroscope on the transmitter, adjust the Steering Trim so that the vehicle can drive as straight as possible, then turn on the gyro. (If the vehicle's inherent steering neutral point is off-center, turning on the gyro will cause it to constantly work in a correction state during driving, resulting in the vehicle wobbling/swerving left and right continuously.)

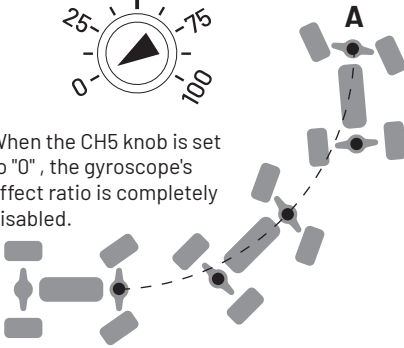
2. If the gyro sensitivity is set too high, resulting in excessive correction responsiveness, the vehicle will wobble or oscillate left and right during high-speed runs. In this case, appropriately reduce the gyro sensitivity until the vehicle no longer shakes or wobbles at high speed.

3. The higher the gyro sensitivity, the greater its intervention in steering (resulting in a larger turning radius).

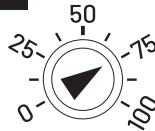
Sample 1



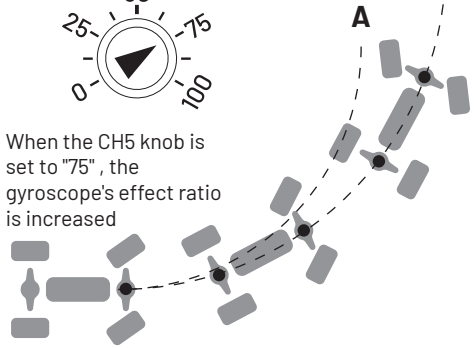
When the CH5 knob is set to "0", the gyroscope's effect ratio is completely disabled.



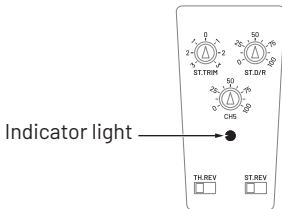
Sample 2



When the CH5 knob is set to "75", the gyroscope's effect ratio is increased



Note: The examples above are provided solely to help players understand the function of adjusting the gyroscope's effect ratio.



Situation 1: When the signal is weak or interrupted, the indicator will flash quickly.

Situation 2: When the power of the transmitter is low, the indicator will flash slowly.

The above situation should be handled as soon as possible to avoid accidents.

Throttle Speed Limiter has 3 speed levels: 50%, 75%, 100%.

50% Speed Level is the training mode; recommend the new beginner to play under 50% Speed Level first.

50



Low speed:50%

75



Medium speed:75%

100



High speed:100%

OFF  ON

Please make sure the transmitter throttle trigger and Steering wheel are normal before starting up. Do not touch the throttle trigger & steering wheel when turning on the power of the transmitter.

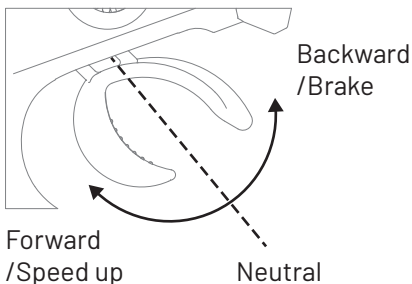
After powering on, the transmitter will automatically pair with the device, and the indicator light will remain steadily lit. If the indicator light blinks, please refer to "Section 04-03-07" for troubleshooting instructions.

### Function 1: Frequency Pairing

If automatic pairing fails, turn off all power sources. ① Restart the ESC power supply. ② Press and hold the CH3 button while turning on the transmitter power. ③ Release CH3. When all lights stay lit continuously, pairing is successful.

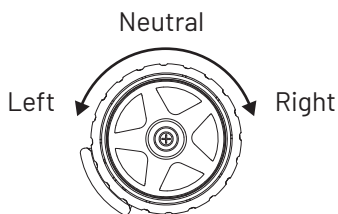
### Function 2: Turn vehicle lights off/on

Corresponding to CH3 channel on SR6 receiver. After connecting the wire between LED light of car body and CH3 channel of SR6, long press the CH3 button of transmitter to change color (7 different of colors : white -> Red -> Green -> Blue -> Yellow -> Purple -> Light Blue), short press to switch light flashing modes (5 different of modes).



#### Note:

When using the transmitter in electric powered vehicles, the throttle trigger should always remain in the neutral position. Otherwise the vehicle may suffer erratic operation of the throttle trigger functions.





## 05 - BUYABLE ACCESSORIES LIST

Remark: Including Section 05-01 to 05-04.

### 05-01 PLASTIC PARTS & HARDWARE

Part#	Name
P12-101B	Body assembly (Red)
P12-101C	Body assembly (Blue)
P12-101D	Body assembly (Transparent)
P12-102	Bumper assembly (Front)
P12-103	Bumper assembly (Rear)
P12-104	Chassis
P12-105	Upper chassis
P12-106	Wheel (Black)
P12-106A	Wheel (Green)
P12-107	Suspension arms (Front)
P12-108	Suspension arms (Rear)
P12-109	Front & Rear wheel carriers
P12-110	Receiver box
P12-111	Nerf bars
P12-112	Tire Casing
P12-113	Vehicle Trim
P12-114A	Main spur gear (Powder Metallurgy)
P12-115A	Drive bevel gear (Powder alloy)
P12-116A	Center Differential (Powder Metallurgy)
P12-117	Motor mounts (Zinc alloy)
P12-118	Main driveshaft (H4×172.4mm)
P12-119B	Vehicle decals (Red)
P12-119C	Vehicle decals (Blue)

**05-01 PLASTIC PARTS & HARDWARE**

<b>Part#</b>	<b>Name</b>
P16-004B	Wheel adapters (Metal)
P16-006B	Steering linkage (Adjustable)
P16-007B	Universal drive shaft (Metal)
P16-009B	Shock absorber (Metal)
P16-015	Servo arm set
P16-016	Steering mechanism
P16-019B	Drive bevel gear (Powder Metallurgy)
P16-022B	Pinion gear (ø3.175mm, Powder Metallurgy)
P16-023B	Differential assembly (Powder Metallurgy)
P16-024	Butterfly rack
P16-025	Differential housing
P16-029B	Differential cup (Metal)
P16-030B	Sun gear (Powder Metallurgy)
P16-031B	Differential large bevel gear (Powder Metallurgy)
P16-032B	Planetary gear (Powder Metallurgy)
P16-033	Bind Velcro
P16-036	Motor heat sink
FUN16-3010Z	Motor cooling fan cover

**05-02 ELECTRONIC DEVICES**

<b>Part#</b>	<b>Name</b>
S1703	Steering sevro (Metal gear)
ESC45	45A, Electronic Speed control (ESC)
SR6	Receiver
UA42-E01	Transmitter
BL2845-38	Brushed motor (2845-3800KV )
LAM12-01	Lamp group
FUN16-2510	Cooling fans (25×25×10mm)
FUN16-3010	Cooling fans (30×30×10mm)
USB-CH1111500	USB Charger (For 11.1V)
B3001	B3 Charger (For 7.4-11.1V)
ESC-ST001	Programming Card
MB-XT2411	XT60 Model battery (11.1V, 2400mAh)

**05-03** **SCREW TYPE****Part#** **Name**

M01-003	Hexagon socket head cap tapping screw (ø2.6×10mm HB)
M01-004	Hexagon socket head cap tapping screw (ø2.6×12mm HB)
M01-005	Hexagon socket head cap tapping screw (ø2.6×15mm HB)
M01-006	Hexagon socket head cap tapping screw (ø2.6×20mm HB)
M01-010	Hexagon socket head cap machine screw (ø3×8mm HM)
M01-012	Hexagon socket countersunk head tapping screw (ø2.6×8mm KB)
M01-016	Hexagonal flat round head self tapping screw (ø2.6×6mm TB)
M01-017	Hexagonal flat round head self tapping screw (ø2.6×8mm TB)
M01-020	Hexagon socket button head machine screw (2.5×15mm TM)
M01-022	Hexagon socket button head machine screw (3×15mm TM)
M01-052	Hexagonal cup head half tooth self tapping screw (ø2.5×13.5)
M01-053	Hexagonal cup head half tooth self tapping screw (ø2.5×20.5)
M01-054	Set screw (ø3×3mm)
M01-058	Hexagon socket countersunkhead tapping screw (2.0×8mm KM)
M01-059	Ball Head Screw (ø8.2×24.76mm)
M02-003.01	M4 hex flanged lock nut
M03-007	Ball bearing (ø6.35×ø9.5×3.2mm)
M03-012	Ball bearing (ø8×ø12.7×4mm)
M04-006	Washer (M4×7×0.8)
M04-007	Washer (M8×10×0.5)
M05-041	Hollow ball (ø5×5.6mm)
M05-042	Hollow ball (ø5×7mm)
M06-014	Pin (ø1.95×9.5mm)
M06-015	Pin (ø2.5×27mm)
M06-016	Pin (ø2.5×38mm)
1601-022	Pin (ø1.8×6.8mm)

**05-04** **TOOL****Part#** **Name**

H1.5	H1.5 screwdriver
H2.0	H2.0 screwdriver
L-H1.5	1.5 L-shaped hex wrench
L-H2.0	2.0 L-shaped hex wrench
C-HS-M4	Cross socket



## 06 - TROUBLESHOOTING

PROBLEM	POSSIBLE REASON	SOLUTION
Vehicle can not move	Batteries are incorrectly assembled in remote controller.	Check transmitter batteries, refer to 04-03-03 for detail.
	Weak or damage battery in the car.	Install fully charged batteries.
	Worn or broken ESC wires or motor.	Check condition, reconnect and insulate.
	High temperature protection is triggered when the ESC is overheated.	Stop driving, ESC or motor has to cool down.
	Motor is damaged.	Replace with new unit.
	ESC or Receiver is damaged.	Replace with new unit.
	The wheel or drive shaft is entangled by debris.	Check components and remove the debris.
	The vehicle is off the control distance.	Operate the vehicle within the controlled range of transmitter.
Short runtime	Battery damaged or not fully charged.	Check condition, replace or recharge.
	Motor is dirty or damaged.	Check condition, replace or recharge.
	Terrain resistance causes excessive power consumption.	Play on other kinds of terrain.
Limited steering angle	The button of Transmitter Steering Dual Rate is set incorrectly.	Adjust Transmitter Steering Rate button per the manual.
	Damaged steering components.	Check components and replace.
Sluggish performance	Battery damaged or not fully charged.	Check condition, replace or recharge.
	Motor is dirty or damaged.	Clean , check condition or replace.
	Drivetrain is dirty or damaged.	Clean , check condition or replace.
Short range or no control on vehicle	Transmitter battery is weak or installed incorrectly.	Check transmitter batteries.
	Servo wires of receiver loose or connected incorrectly.	Reinstall signal wires to ESC receiver.
	Transmitter and ESC receiver are not paired correctly.	Frequency re pairing, refer to 04-03-10 for detail.
The indicator of the transmitter is not bright	The battery is installed incorrectly or has not enough power.	Install the battery properly or replace a new battery.
	The transmitter doesn't work.	Replace a new one.
Steering / Throttle works intermittent	ESC shuts down due to overheating.	Stop driving, ESC or motor has to cool down.
	Transmitter and ESC receiver are not paired correctly.	Check if any interference sources, or repair the transmitter and ESC receiver.

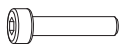
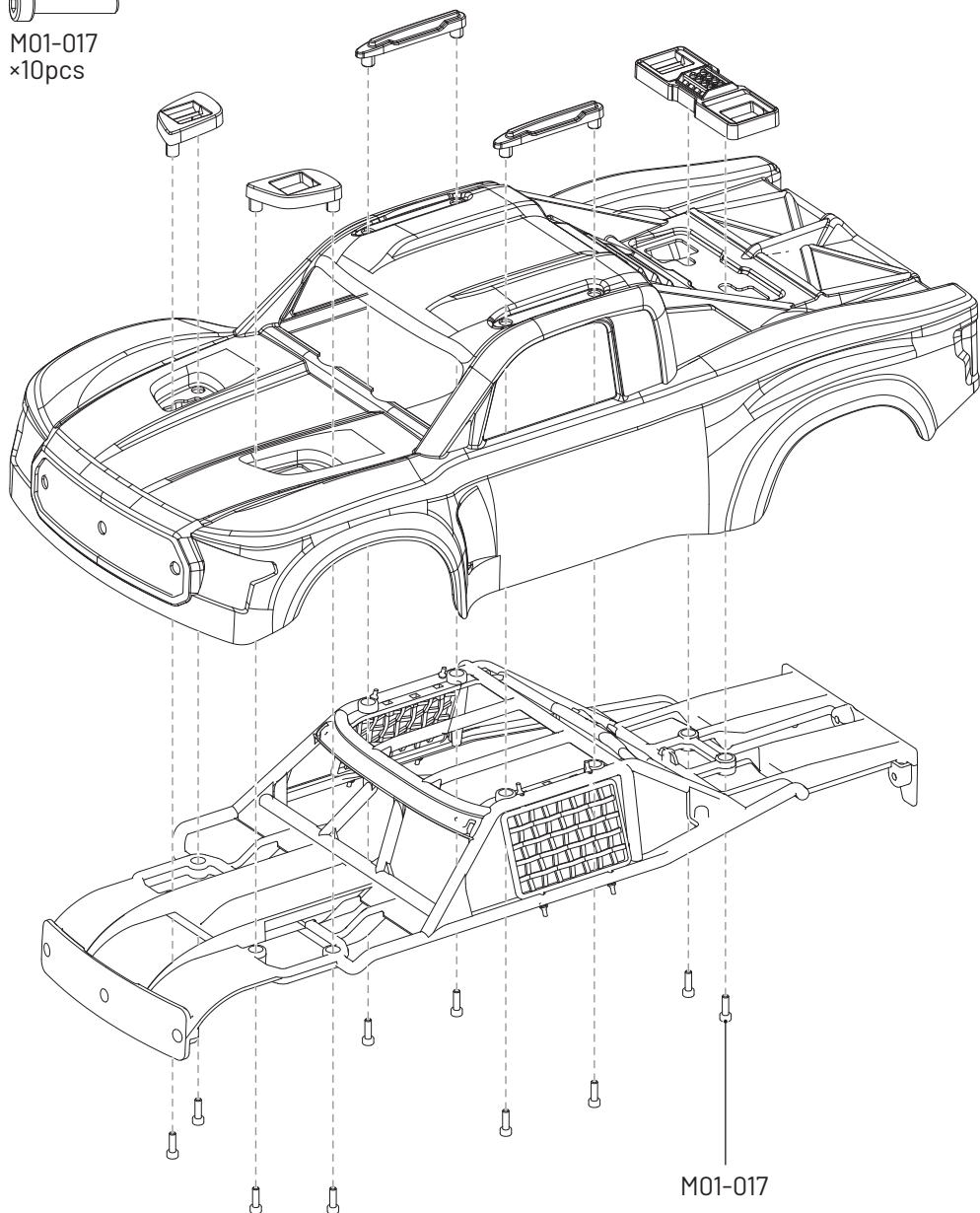
PROBLEM	POSSIBLE REASON	SOLUTION
Vehicle wanders left / right	Steering trim set out.	Adjust steering trim.
	Steering components are damaged.	Check and replace components.
	Drivetrain is dirty or damaged.	Clean, check, or replace.
Steering / Throttle operation reversed	"TH.REV" or "ST.REV" on the transmitter is set reversely.	Adjust the "TH.REV" or "ST.REV" on the transmitter per the manual .
	Check the wires from ESC to the motor are connected correctly .	Disconnect and reconnect.
The speed is lower than claimed	Use the lower speed level on Throttle Limiter.	Choose the higher speed level on Throttle Limiter.
	The Pinion Gear was jamming against the Motor Mount.	Disassemble Motor Mount to adjust the Pinion Gear.
Long frequency matching time	The signal is disturbed.	Restart the vehicle and the transmitter.
Operation delay	There might be obstacles or interferences.	Remove or avoid the obstacles or interferences.
The vehicle moves forward (backward) automatically or makes a sound of "en...."	Something wrong in transmitter.	Restart the transmitter.



## 07 - EXPLODED VIEW (APPENDIX)

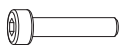
Remark: Including Section 07-01 to 07-07.

P12-101B/C

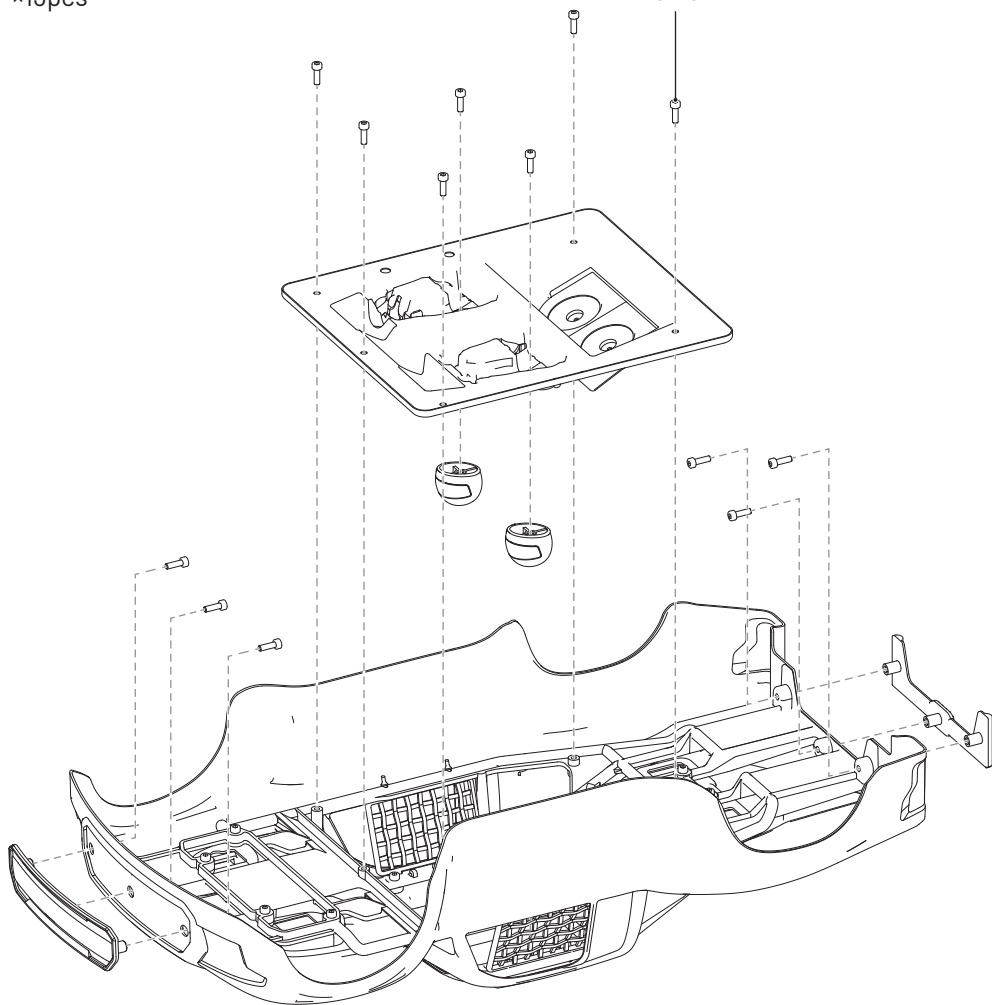
M01-017  
×10pcs

M01-017

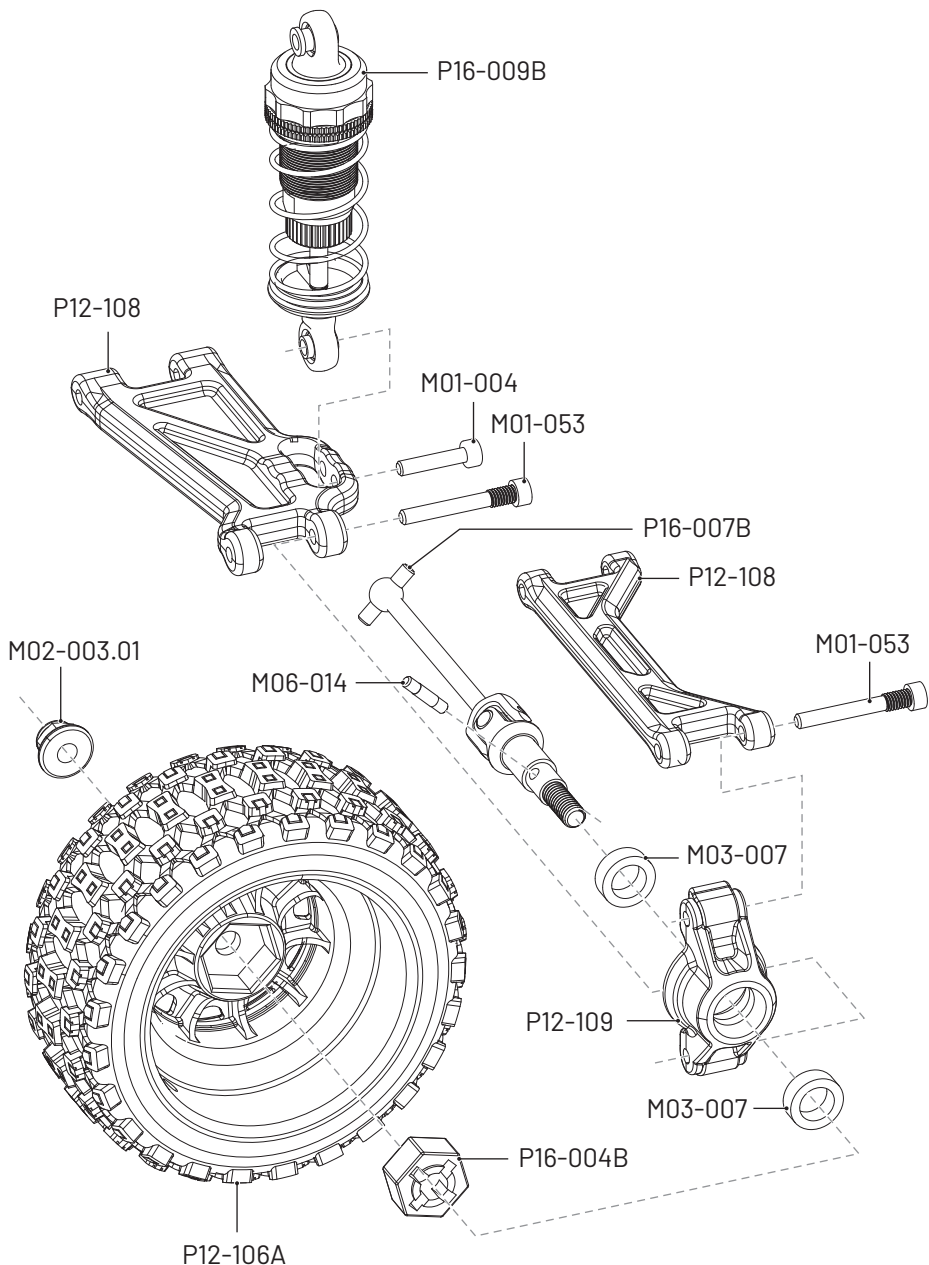
P12-101B/C

M01-017  
×13pcs

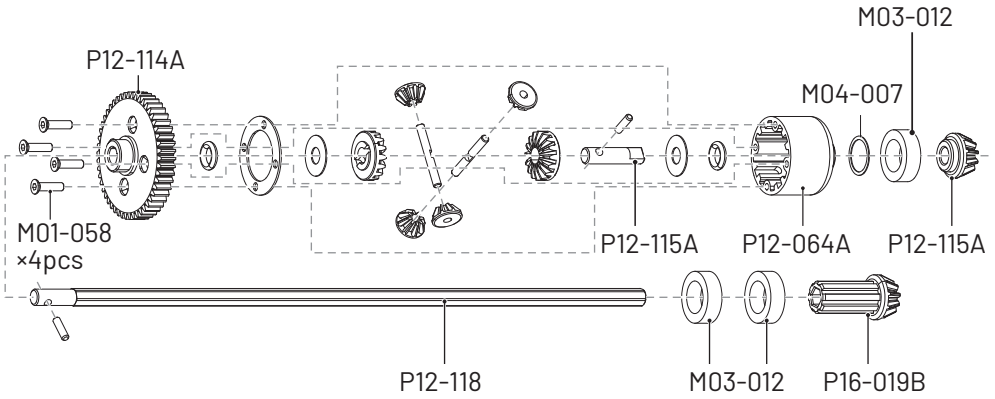
M01-017



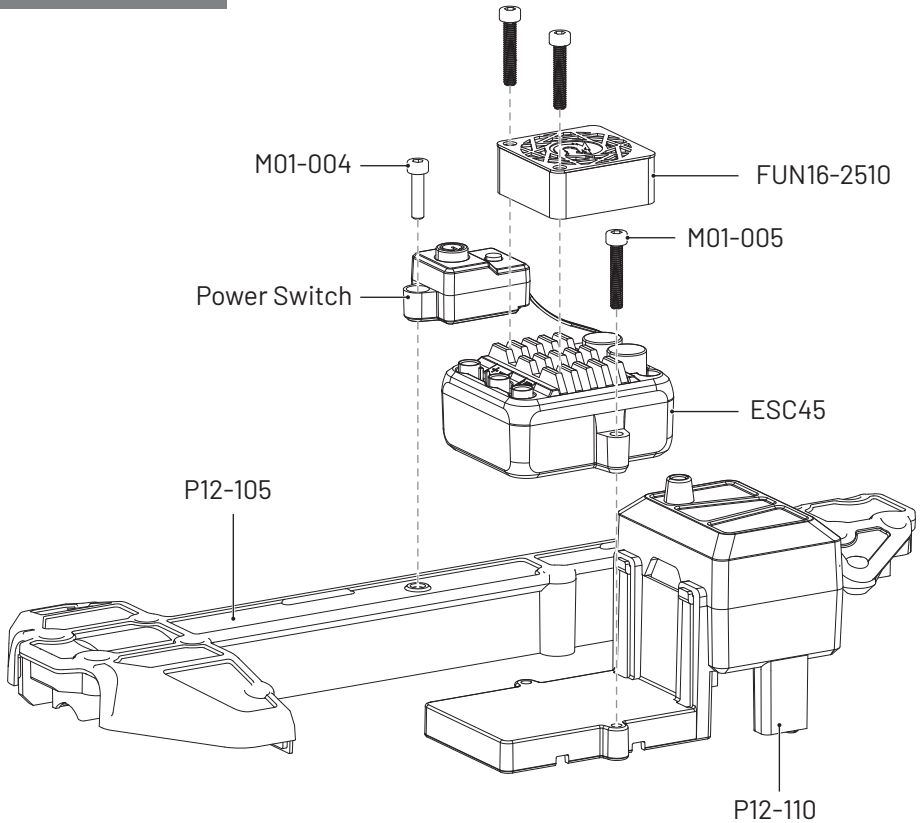




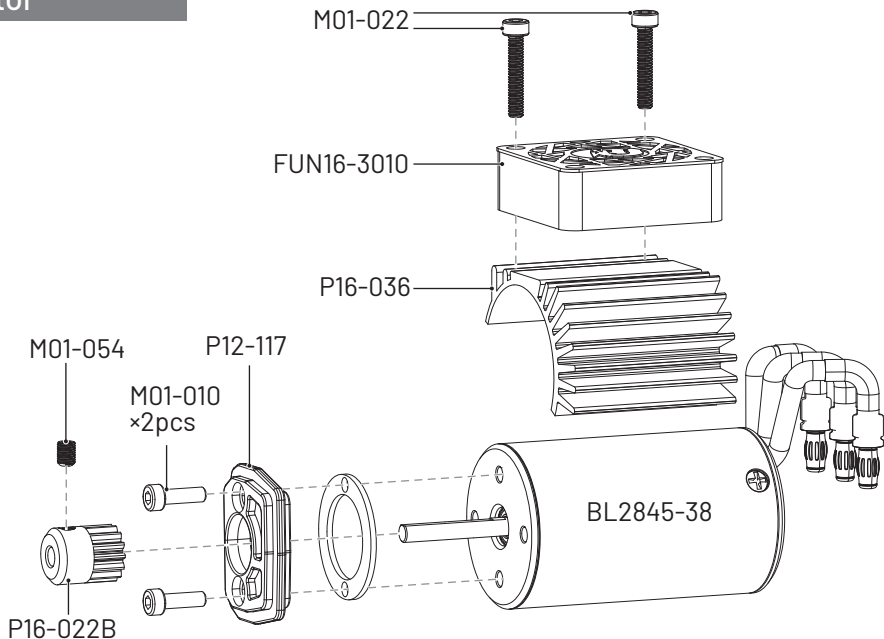
P12-116A Center Differential (Steel)



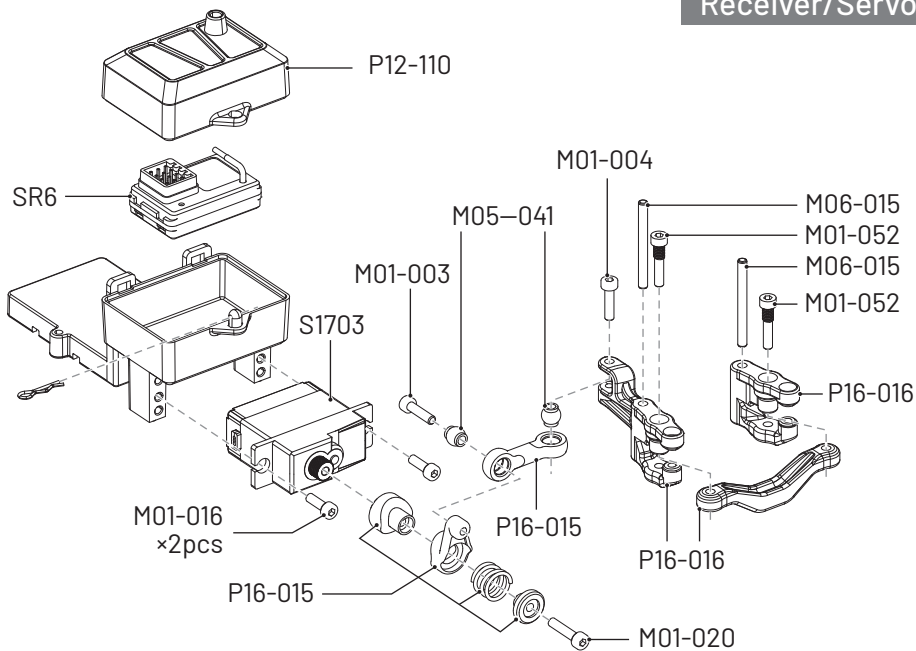
ESC



Motor

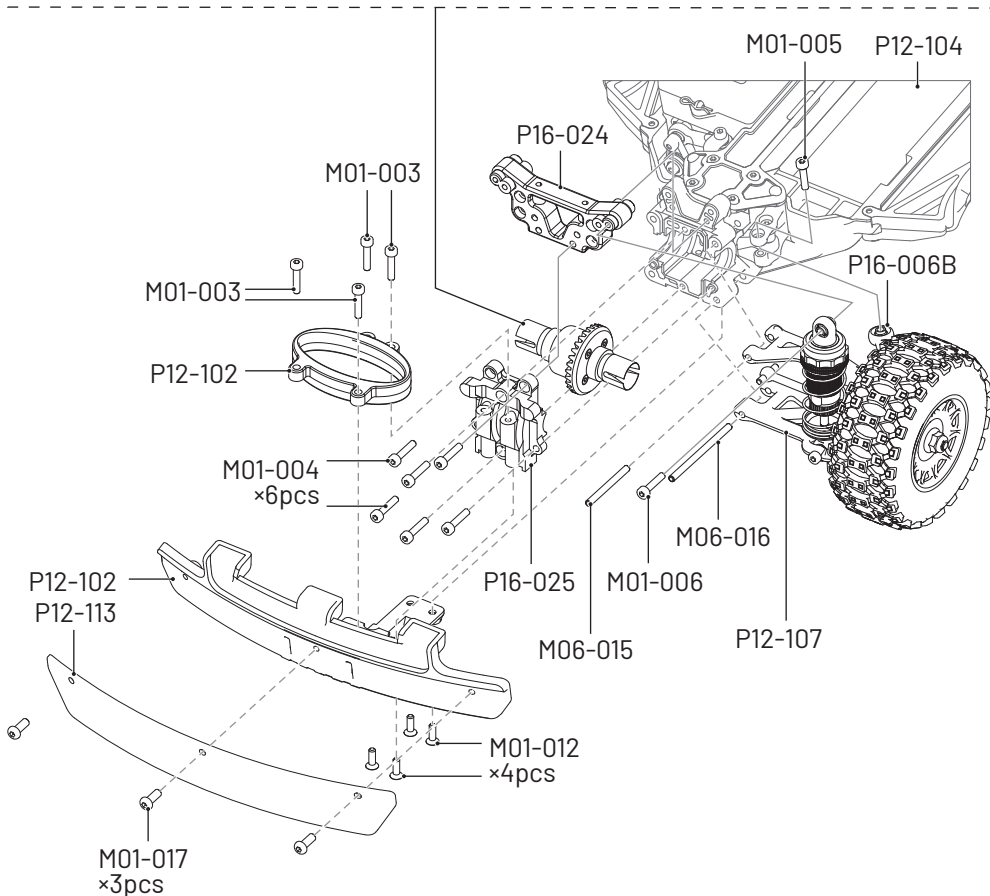
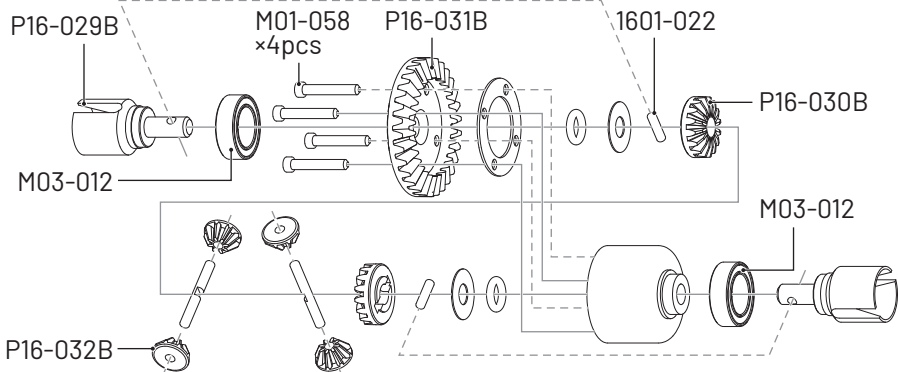


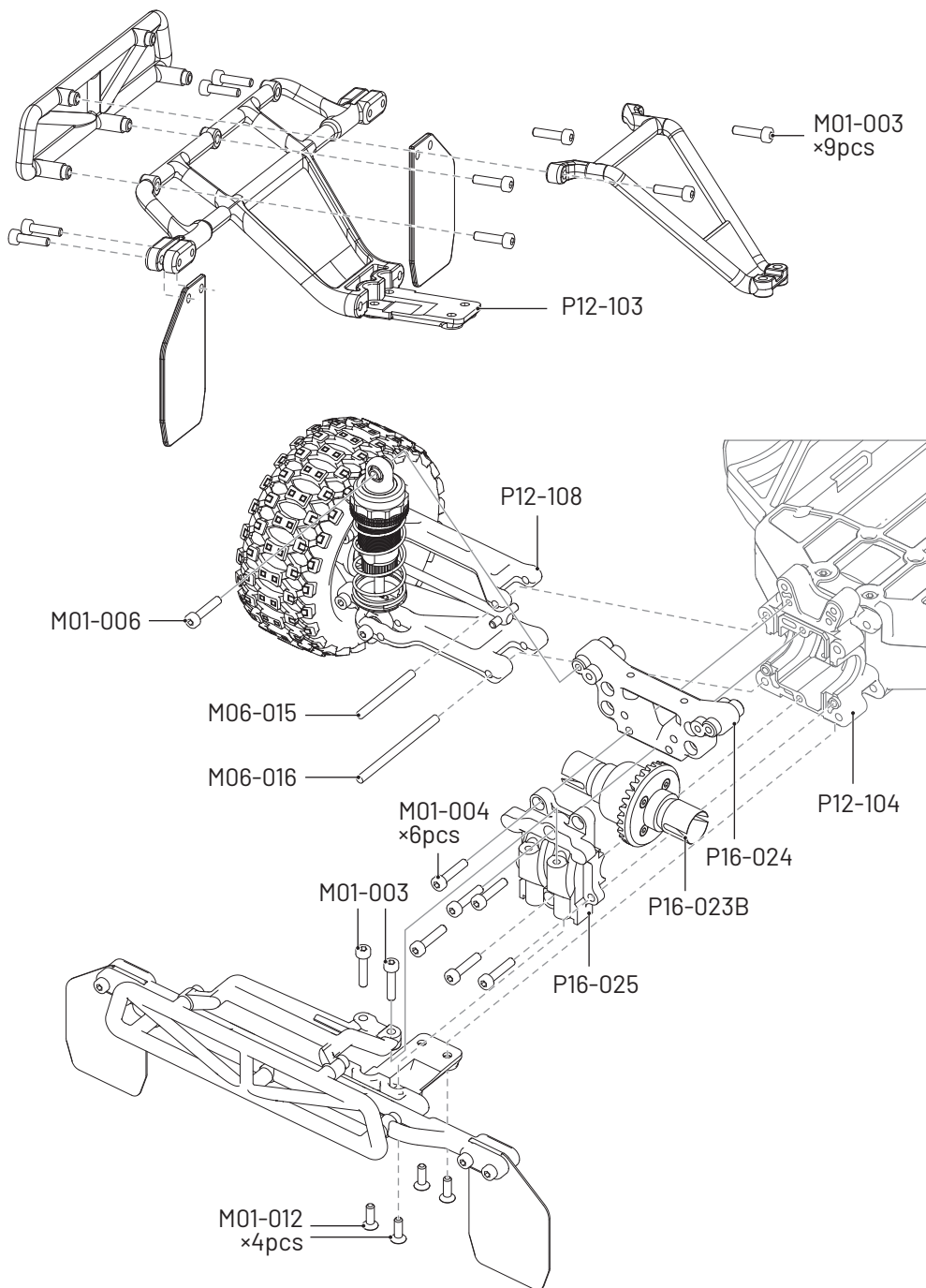
Receiver/Servo



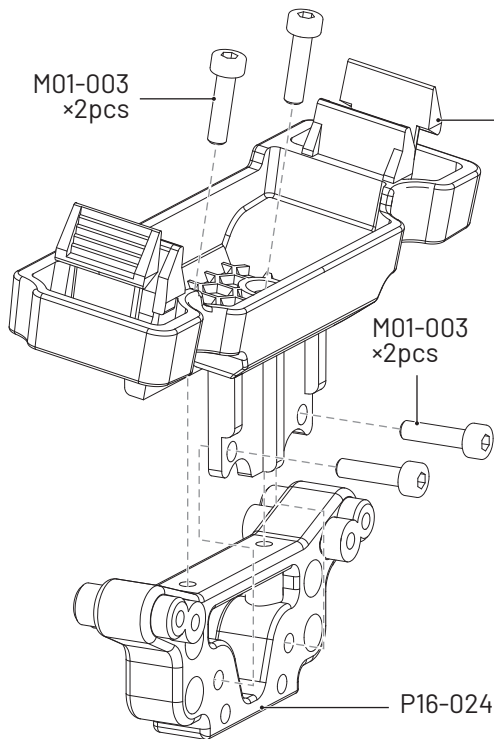


P16-023B

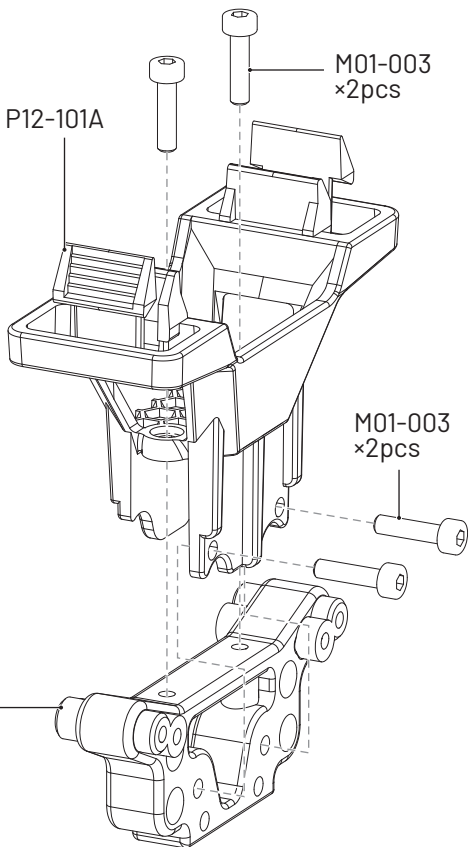




Front lock



Rear lock







Copyright © UDIRC®, All rights reserved. Made in China  
Manufacturer: SHANTOU CITY UDIRC TECHNOLOGY COMPANY LIMITED  
Address: Guangfeng Industrial Zone, Guangyi street, Chenghai District,  
Shantou City, Guangdong Province, China









